

FOLDING ARM AWNING SYSTEM

# KUMO



## FEATURES

- Class 2 wind resistance according to European standard EN 13561 (550x315 cm)
- Retractable folding arm awning with cassette
- Wall and ceiling installation
- Inclination ranges between 5° and 85°
- HOME arms with DATSystem
- Die Cast Aluminium Brackets & Arm Supports
- Maximum size of a single section: 600x315 cm
- Manually operated or motorised
- Continuous micrometric regulation of inclination
- Certified Italian Stainless steel screws and pins
- Certified by TÜV Rheinland
- Design patented
- Very few components for quick assembly and installation
- Top or Face fix installation

## COLOUR RANGE

Graphite White Black



AUSTRALIA | EUROPE | USA [rolleaseacmeda.com](http://rolleaseacmeda.com)

© Rollease Acmeda Pty Ltd

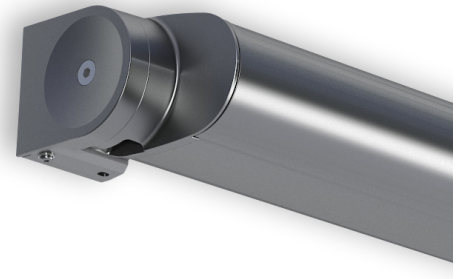
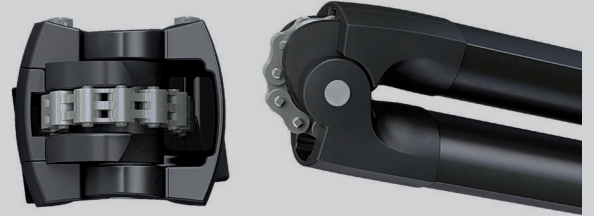
 **ROLLEASE  
ACMEDA**  
PRECISION IN MOTION

# UNIQUE ARM SYSTEM

The class performing DAT (Dynamic Arm Torsion) system design ensures optimum chain & fabric damage prevention. The awning arms open and close without touching fabric during operation. The DAT System features only stainless steel screws, bolts and pins and is the most advanced choice for your awnings.

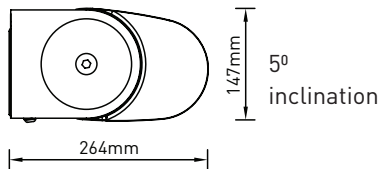
## FEATURES

- Strong and secure eight link stainless steel chain.
- Outstanding mechanical performance.
- Fabric damage prevention.
- Teflon coated for marine grade protection.
- Arms can be adjusted to tilt in single degree increments.

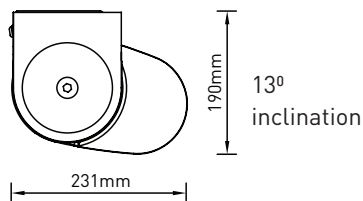


## DIMENSIONS

### WALL FIX

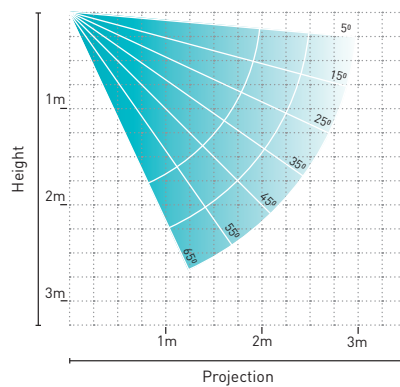


### TOP FIX

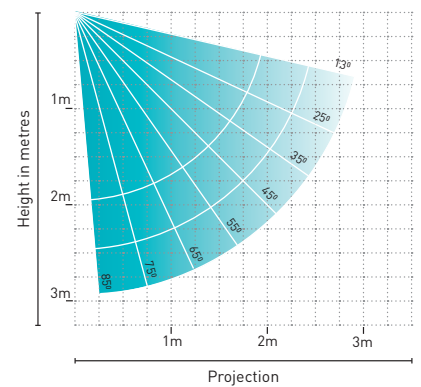


## ARM PROJECTION

### Wall fix



### Top fix



## SYSTEM CAPACITY

Max width: 6m

Max projection: 3.15m

Wind Resistance: Class 2,  
EN 13561 (550 cm x 315 cm)

Independently tested and approved by



## AUTOMATE MOTORISATION



Easily control your motorised awning with a remote control or smart phone device using the Automate App & Pulse 2 hub. Control awnings from anywhere in the world, set scenes and timers for automatic control and always know what your awnings are doing thanks to ARC bi-directional live feedback. The Pulse 2 also integrates with smart voice-assistants such as Google Assistant, Amazon Alexa and now Apple HomeKit with Siri.

